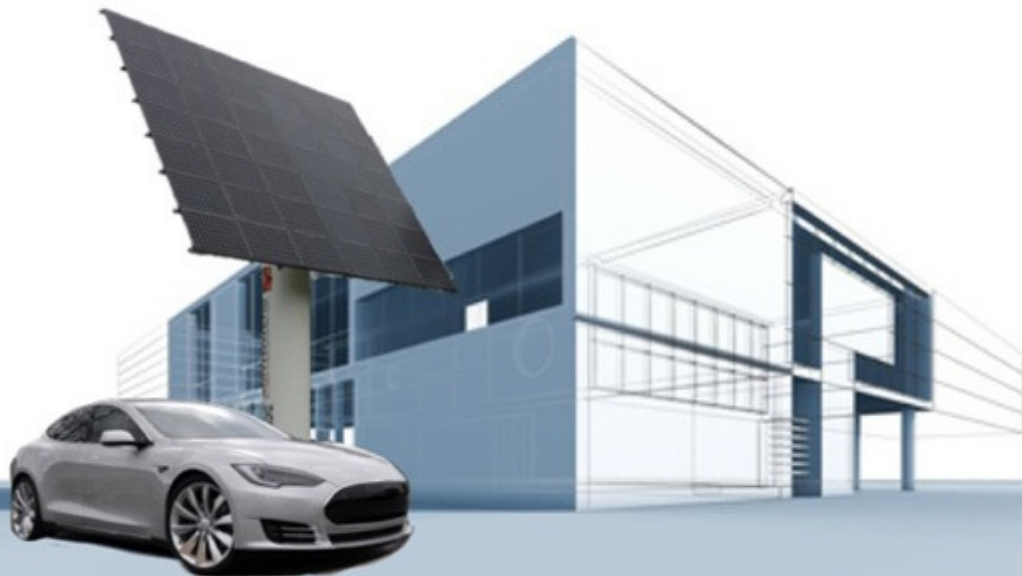
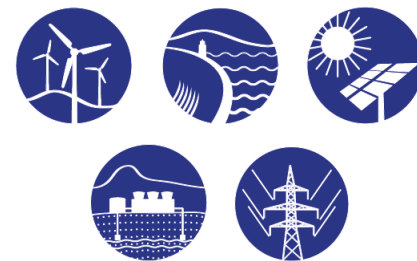




# Example of installation Sun Tower PV Super Charger

2013 December



# 1. Colocation of the structure



- Turn around diameter: 11 metros.
- Central part in one piece.
- Galvanized Iron technology.



## 2. PV modules



Sun Power solar module X- SERIE 327W / 335W / 345W



# 3. Installation LED

3 W/m blue colored.



# 4. Tower assembling



- Configuration in two pieces (height: 6 metros).
- Internal piece for tower structure.
- External piece for company logo.





## 4. Tower assembling (first part)



- Colocation of the internal piece on the basement.
- External piece for the support of the PV tracker.<sup>6</sup>

## 4. Tower assembling (second part)



- Colocation of the external piece with the company logo and the inverter window.



## 5. PV tracker colocation



- Colocation of the PV frame, at 4,30 m high and the gear for the tracker system.



## 6. Operative tower, day and night



The tower is operative in 24 hours



# 7. Contact us:

Distributor of: Löseke & Marx



**future energy**  
CONSULTING SERVICES

**Marc Royen**

**CEO**

**Tel. +41 79 197 42 22**

**Ruppenstrasse, n° 20**

**9212 Arnegg | Mwst CHE – 182.370.952**

**PARTNERS:**



**Solarec**  
Thermography & Engineering



**PROCONSULT**  
Proyectos & Consulting Almería

